



# List of Core values

Professional, Reliable, Efficient

[www.sunnysteel.com](http://www.sunnysteel.com)

## Sunny Steel Enterprise Ltd.

No.273, Siping Road,  
Shanghai, 200081,  
China  
Phone:+86 21 3378 0199  
Fax:+86 21 5107 9722  
E-mail:sales@sunnysteel.com



Collect Steel pipe and fitting Resources

## Full range, every size

By choosing Sunny Steel as your supplier, you can focus on what matters most to you instead of getting bogged down in the details.

We are guided and motivated by the following 3 core values.

**Professional**

Our team are highly trained and experienced in servicing and producing all types of steel supplies. Sunny Steel prides itself on the professional relationship we develop with all clients.

**Reliable**

We are reliable because we know the market, we are honest, truthful and we will meet our promise to our clients. We provide our clients with the best value products in an effort to grow their reputation within their industry.

**Efficient**

We are committed to deliver a total solution of steel pipes, fittings, flanges logistics and technical services to fulfill our client's requirements in the most efficient and cost effective manner.



## WHY SUNNY STEEL

Sunny Steel provide a wide range of steel products as Steel pipes, Seamless tube and seamless pipes, Alloy pipes, Pipe fittings, Composite steel pipe used in the industry, construction etc.

Our customers are able to rely on us for deliveries timed to meet the exacting requirements of their projects as well as for regular deliveries of stock.

We enjoy close working relationships with our customers working with them from concept through to completion often resulting in economy of design and the cost benefits that go with it. By choosing Sunny Steel as your supplier, you can focus on what matters most to you instead of getting bogged down in the details.



## Butt weld pipe fittings

Butt weld pipe fittings allow for changing the direction of flow, reducing pipe sizes and attaching auxiliary equipment. Fittings are used wherever liquids, gases, chemicals and other fluids are created, processed, transported, or used.



| Standard               | Grade   |
|------------------------|---|
| ASME:                  | ANSI B16.9, ANSI B16.28, MSS-SP-43  |
| DIN:                   | DIN2605, DIN2615, DIN2616, DIN2617, DIN28011                                  |
| EN:                    | EN10253-1, EN10253-2  |
| ASTM A403 – ASME SA403 | Standard Specification for Wrought Austenitic Stainless Steel Piping Fittings |
| ASME B16.9             | Factory-Made Wrought Fittings Buttwelding                                     |
| ASME B16.25            | Buttwelding Ends  |
| ASME B16.28            | Wrought Steel Short Radius Elbows and Buttwelding Returns                     |
| MSS SP-43              | Wrought and Fabricated Butt-Welding Fittings for Low Pressure                 |



## Chrome Moly Pipe

ASTM A335 Pipe (ASME S/A335, Chrome-Moly) is a seamless ferritic Alloy-Steel Pipe for high temperature service.

Main grades: ASTM A335 P5, P9, P11, P-22, and P91

Size range: NPS 1/4" to NPS 24"

## Alloy steel pipes

Alloy steel pipe is a kind of seamless steel pipe, its performance is much higher than the general seamless steel pipe, because this steel pipe inside containing Cr, high temperature resistance, low temperature, corrosion-resistant performance of other non-pipe joints not match, so the more extensive use of alloy tube in the petroleum, aerospace, chemical, electric power, boiler, military, and other industries.

The alloy steel pipe adopts high quality carbon steel, alloy structural steel and stainless & heat resisting steel as raw material through hot rolling or cold drawn to be made.



### ASTM A333

Standard Specification for Seamless and Welded Steel Pipe for Low-Temperature Service and Other Applications.



### ASTM A213 09

Seamless Ferritic and Austenitic Alloy Steel Boiler, Superheater and Heat-exchanger Tubes



### EN 10216-2

EN 10216-2 is a European standard suitable for seamless steel tubes for pressure purposes.



### ASTM A519

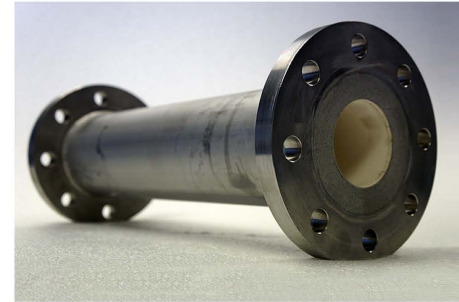
covers for several grades of carbon and alloy steel mechanical tubing, either hot-finished or cold-finished.





## Ceramic lined pipe

Ceramic lined pipe is made through self-propagating high-temperature synthesis (SHS) technique.



## Ceramic sleeve lined Pipe

The ceramic tube or ceramic sleeve sintered as a whole part, and then assemble it into the steel pipe with our high-strength-temperature-resistant epoxy adhesive.



## Ceramic Tile Lined Pipes

Ceramic Tile Lined Pipes have very uniform coating of specially formulated ceramic material that is affixed to the inner of the pipe and gives a very smooth surface.



## Bimetal Clad Pipe

Bimetal Clad Pipe is cast with mold vanishing vacuum suction casting cladding process.

## Seamless steel pipes

We can make and market cold-drawn and hot rolled seamless steel pipes and cold-drawn special-section seamless pipes which are widely applied in the industries of petrochemical, boiler, automobile, mechanical, construction.



ASTM A106

Standard Specification for Seamless and Welded Steel Pipe for Low-Temperature Service and Other Applications.



ASTM A210

Seamless medium-carbon steel boiler and superheater tubes, including a minimum wall thickness of the security side.



ASTM A179

Seamless Cold-drawn Low-Carbon Steel Heat-Exchanger and Condenser Tubes



15CrMoG

The range of 15CrMoG pipe sizes that may be examined by each method shall be subjected to the limitations in the scope of the respective practice.



12Cr1MoVG

GB 5310 12Cr1MoVG is applicable to seamless tubes for making steam boiler whose pressure is high or higher and seamless tubes used as pipelines.



ASTM A192

Seamless Carbon Steel Boiler Tubes for High Pressure



## Stainless pipes & tubes

Stainless Pipes and tubes are made from more than 20 steel grades of various corrosion resistance and are intended for application in conditions of a wide range of corrosion environments and temperatures in heat exchanger.

- A 213 / A 213M-09 -Seamless ferritic and austenitic alloy steel boiler, superheater and heat exchanger tubes
- A 268 / A 268M -Seamless and welded ferritic and martensitic stainless steel tubing for general service
- A 269 / A 269M - Seamless and welded austenitic stainless steel tubing for general service
- A 312 / A 312M - Seamless and welded austenitic stainless steel pipes
- A 450 / A 450M-03 -Standard Specification for General Requirements for Carbon, Ferritic Alloy, and Austenitic Alloy Steel Tubes
- ASTM A511 - Seamless Stainless Steel Mechanical Tubing and Hollow Bar
- A 789 / A 789M -Seamless and welded ferritic-austenitic stainless steel tubing for general service
- A 790 / A 790M-08 - Seamless and welded ferritic-austenitic stainless steel pipe



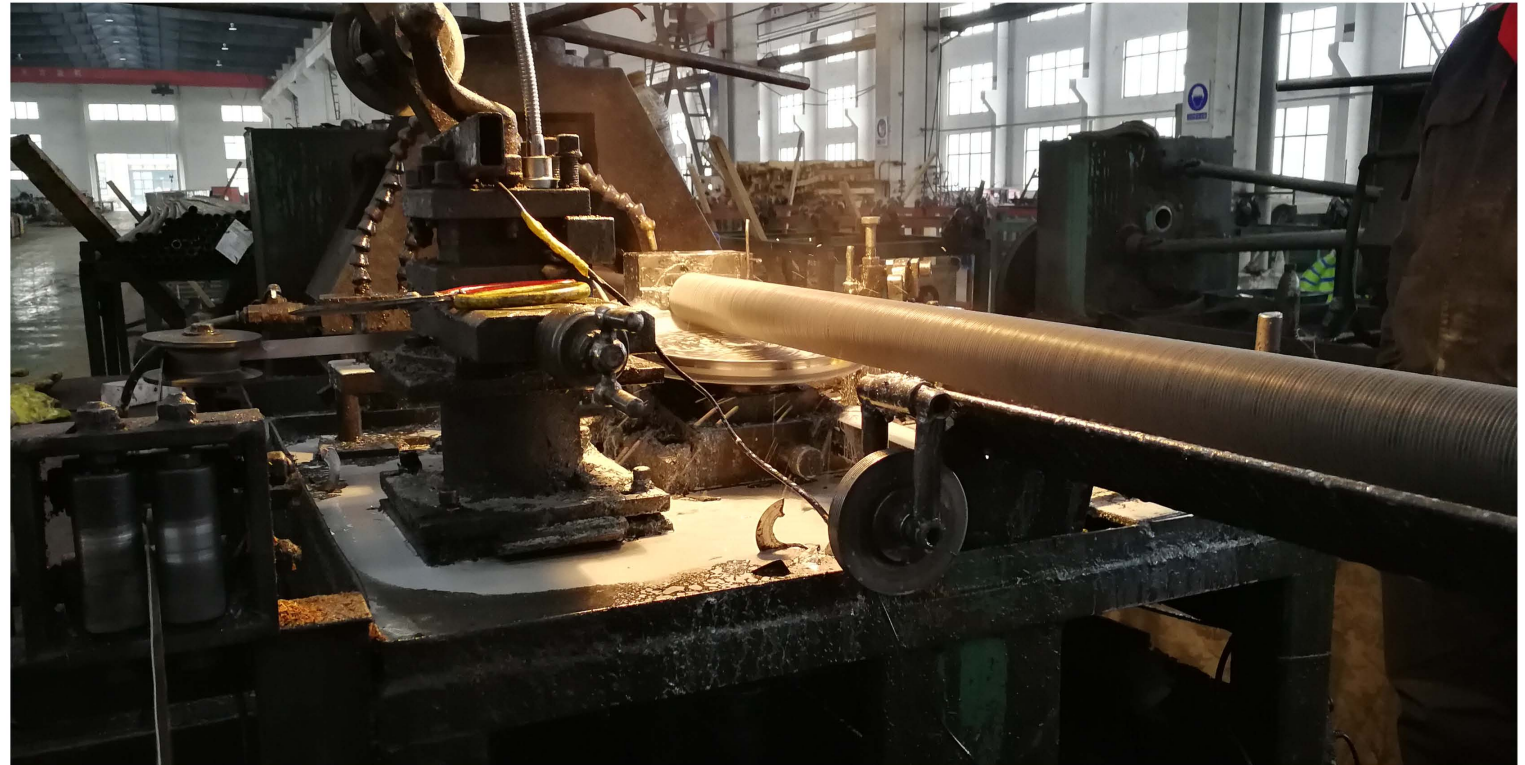
## ASME SA213 TP347H

Standard Specification for Seamless Ferritic and Austenitic Alloy-Steel Boiler, Superheater, and Heat-Exchanger Stainless Tubes, Stainless Pipe.



## Fin tube

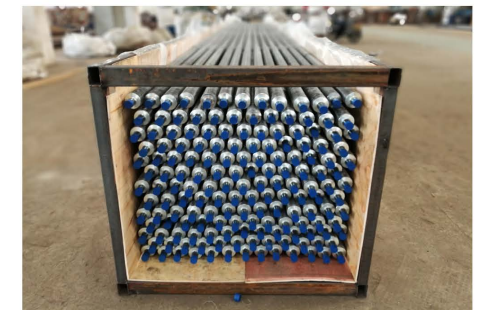
A fin tube is a tube that has small fins around the outside surface. These fins act as a filter and a mechanism to transfer heat from the material inside the tube to the outside space or vice versa.



Third party inspection raw tubes



On process



Packing